



Basic Radar Altimetry Toolbox: A set of tools for all altimetry users

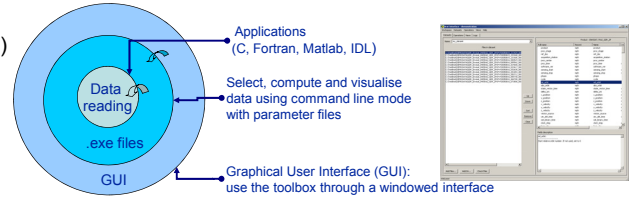
V. Rosmorduc⁽¹⁾, vrosmoduc@cls.fr
J. Benveniste⁽²⁾, N. Picot⁽³⁾, D. Earith⁽⁴⁾,
C. Maheu⁽⁴⁾, S. Niemeijer⁽⁵⁾
(1) CLS, France, (2) ESA/ESRIN, Italy,
(3) CNES, France, (4) Silogic, France,
(5) Science&Technology, The Netherlands

A joint ESA-CNES project, to make easier the use of altimetry

The Basic Radar Altimetry Toolbox is an "all-altimeter" collection of tools, tutorials and documents designed to facilitate the use of radar altimetry. Such an integrated approach is vital not only to assess what altimeter products offers, but also to show the system and consistency with the past.

Graphical User Interface (GUI)

- An easy-to-use tool, part of the Toolbox
- interactive interface for Windows & Linux (soon MacOS)
- definition of Dataset, Operation and selection to apply
- definition of display
- saving of the outputs
- saving of the data context to retrieve it later on
- saving and import/export of user-made formulas



Publics

"Expert" altimetry users

- have tools to use most existing data
- know about altimetry & processing
- new data handling tools, comparison and validation functions
- lecture material sources

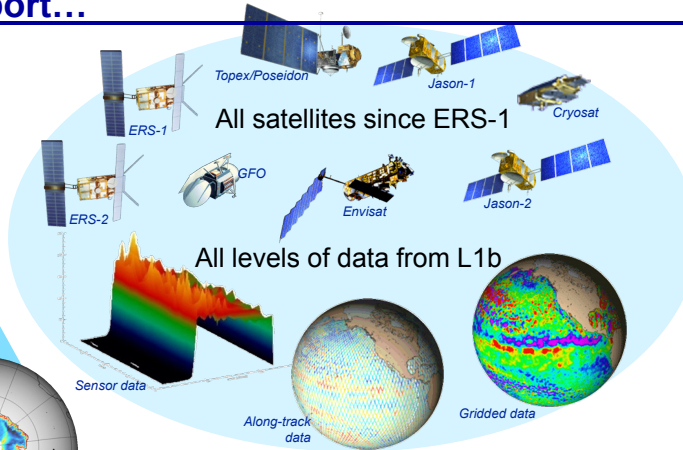
"Regular" altimetry users

- have tools to use some data
- know the basics of altimetry
- tools for data / missions they don't use yet
- advanced altimetry information

"Novice" altimetry users

- little or no background in data handling
- no knowledge of altimetry
- interactive Graphical User Interface (GUI)
- basic information about altimetry

Data import...



... & export

- Systematic NetCDF output
- Ascii dump possible (soon built-in ascii export)
- Data binning
- Image export (png, tif, jpg, bmp; soon geoTiff and Google Earth .kml)

Radar Altimetry Tutorial

Altimetry technologies and processing

- How it works
- Data flow
- Future technology improvements

Applications

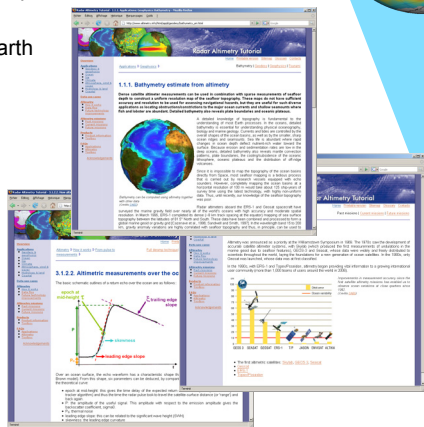
- Geodesy & solid Earth
- Ocean
- Ice
- Climate
- Weather
- Hydrology & land
- Coastal

Altimetry missions

- Past missions
- Current missions
- Future missions

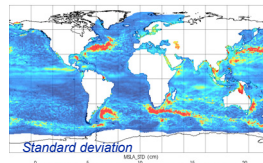
Products

- Data
- Software
- Documentation

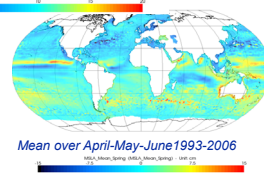
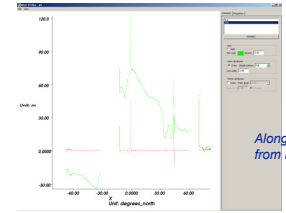


Computations and selections

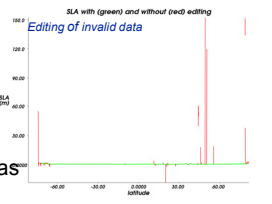
Statistical functions



Parameters combinations

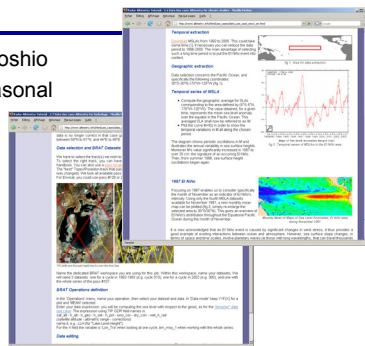


Selection upon user-defined criterias

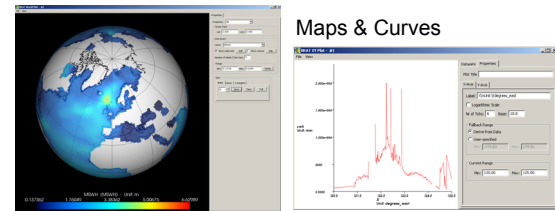


Data use cases

- Mesoscale studies: eddies in the Kuroshio
- Currents: the Gulf Stream and its seasonal variations
- Wind & waves: seasonal distribution
- Hydrology: the Amazon Basin
- Climate: El Niño
- Climate: mean sea level
- Hydrology: Aral Sea level
- Wind & waves: Hurricane Katrina
- & four more to come



Displays



Several projections available

